

MR-J4

Servo and Motion Control

Innovative Servo Technology

for improved safety, productivity and energy efficiency



Single, dual and triple-axis amplifiers for improved economy, energy efficiency and cabinet space

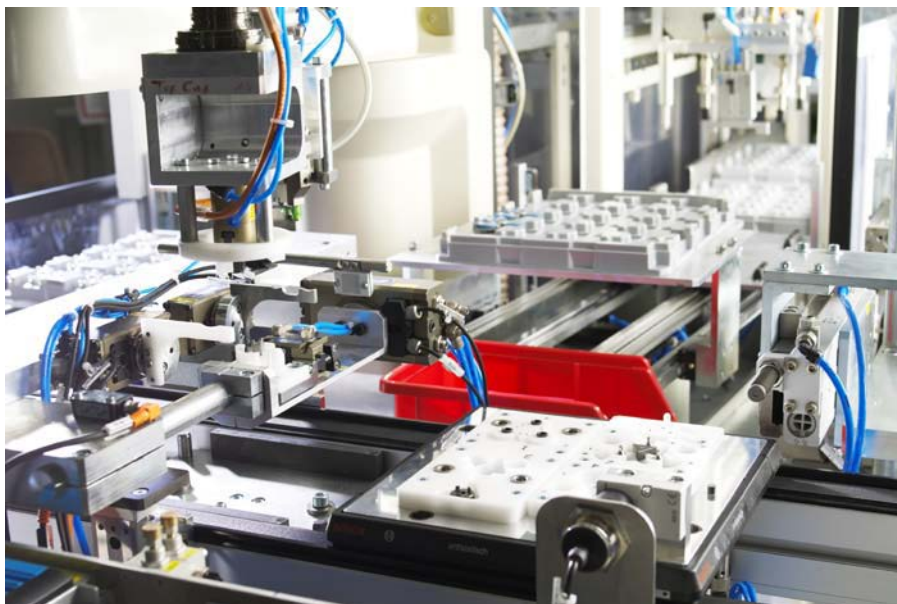


Operation of rotary motors, linear motors and direct drive motors with a single unit



Safety at all times – STO (Safe Torque Off) and SS1 (Safe Stop 1) in accordance with EN 61800-5-2. SS2/SOS/SLS/SBC and SSM options available

Safe, user-friendly and energy-efficient



Feed equipment is one of the servo's many applications.

The MELSERVO MR-J4 series of servo amplifiers and the associated positioning units, motion modules and high-end motion control systems from Mitsubishi Electric enable machine builders and end customers to increase production safety and improve productivity. The MR-J4 amplifier range with its high performance potential and wide-ranging functionality scores in all areas thanks to simple operation and commissioning. The MR-J4 is of particular interest for manufacturers of packaging machines, traversing tables and handling systems.

Innovative and powerful

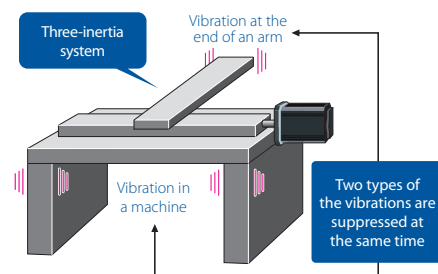
The MR-J4 amplifier series has been developed for the automation requirements of tomorrow. Mitsubishi Electric has incorporated numerous innovative and user-friendly functions to minimise the time-consuming and elaborate matching of mechanical and electronic systems.

The system tunes itself quickly and easily thanks to "Realtime Auto Tuning" and "Vibration suppression control". These functions are available both at start-up and during operation and thus reduce commissioning and parameterisation times.

The amplifiers also feature a "Life Diagnosis Function". This function checks the state and quality of the installed components, such as capacitors and relays, over the whole life cycle, and informs the user and operator of any abnormalities. This virtually eliminates failures and machine downtime.

Mechanical system characteristics are also monitored, and undesirable vibration and friction are checked and directly suppressed, thus preventing system resonance. This function not only damps drive train vibrations but also oscillations at the end of a tool arm.

The absolute encoder which is fitted as standard has a resolution of 22 bits. This corresponds to more than 4 million pulses/revolution. The result is excellent true-running

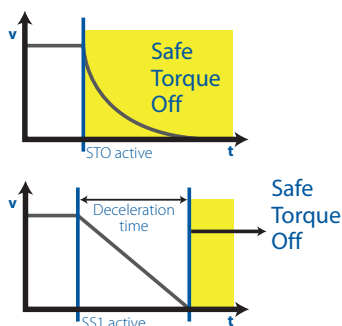


Automatic vibration suppression

characteristics and a maximum positioning accuracy and processing speed which more than satisfy the performance requirements of modern high-end machines.

Safety is top priority

The designers of the MR-J4 series also had the user and the future in their sights when it came to safety and safety functions. As standard, the amplifiers feature STO (Safe Torque Off) and SS1 (Safe Stop 1) safety functions in accordance with EN 61800-5-2. This achieves safety level SIL according to EN 62061 and PLd according to EN 13849-1. In conjunction with a Mitsubishi Electric motion controller, the MR-J4 series can be expanded by the addition of other EN 61800-5-2 safety functions such as SS2, SOS, SLS, SBC and SSM.



Safe motor control even in emergencies

Economic

Alongside the standard MR-J4-A version (analogue/digital/pulse train) and the MR-J4-B version (SSCNETIII/H Motion network), with the MR-J4 series, Mitsubishi Electric is for the first time offering two additional versions for the operation of two or three servo motors. The dual and triple-axis amplifiers (MR-J4W2B and MR-J4W3B) are accordingly more compact and more efficient than three single amplifiers. As a result, the machine builder not only saves space in the electrical cabinet, but also valuable energy and at the same time reduces CO₂ emissions.

Flexible motor selection

Another highlight of functionality and flexibility is the possibility of connecting different motors to the MR-J4 amplifier. The servo amplifier can be conveniently and easily used with rotary motors, linear motors and also direct drive motors.

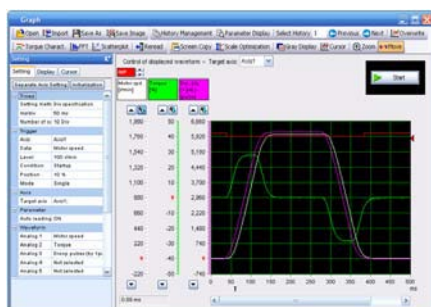


Large choice of different servo motors

A choice of motors from the HG-KR/MR series is available for the lower power range from 50 to 750 W. The maximum torque ranges from 0.48 to 7.2 Nm and the maximum speed is 6000 rpm. The HG-SR series covers the middle power range from 0.5 to 7 kW and a maximum of 100 Nm. All motors have protection class IP65 or IP67 (protected against dust and spray water) and are therefore suitable even for the toughest industrial environments.

User-friendly software

The MR Configurator2 programming tool allows convenient commissioning and diagnostics. Calibration, monitoring, diagnostics, reading and writing of parameters and test operation can be carried out easily on a standard PC. MR Configurator2 ensures a stable machine system, optimum control and short set-up times. Even less experienced users can set up an MR-J4 servo system quickly and precisely thanks to the wide range of automatic adjustment aids.



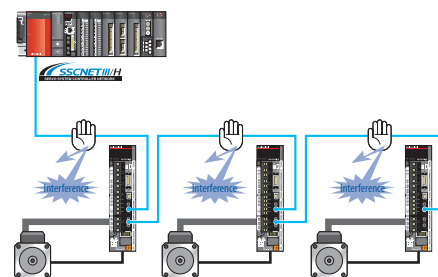
Monitoring and testing with the online diagnostics

High-speed motion on the network

As well as conventional positioning by means of pulse trains, the MR-J4 series also features the SSCNETIII/H high-speed motion network. SSCNETIII/H enables a data transfer rate of 150 Mbit/s and a bus cycle time of only 0.22 ms. The purely optical network uses optical cables which prevent electromagnetic interference and thus ensure maximum performance, precision, reliability and immunity to interference.

There is no complicated wiring thanks to a simple connection system. The system is "Plug & Play" and therefore reduces the amount of wiring and possible wiring errors.

The SSCNETIII/H achieves fully synchronised communication. Most notably, this has technical advantages in printing machines and food-processing machines which require synchronous accuracy.



Reduction of interference by the SSCNETIII/H optical network

Specifications ///

Servo amplifier MR-J4-□A/B ^①	10 0.1 kW	20 0.2 kW	40 0.4 kW	60 0.6 kW	70 0.75 kW	100 1 kW	200 2 kW	350 3.5 kW	500 5 kW	700 7 kW
Power supply	1~200 – 240 V AC, 1~/3~200 – 240 V AC (~720W), 3~200 – 240 V AC (1k~7kW)									
Control functions	Positioning/Speed/Torque									
Control connections	(A) Analogue/Pulse train/9 digital inputs/6 digital outputs, (B) SSCNETIII/H/3 digital inputs, 3 digital outputs									
Interfaces	USB, RS485, RS422									
Protective functions	Overcurrent shutdown, regeneration overvoltage shutdown, overload shutdown (electronic thermal), servomotor overheat protection, encoder fault protection, regeneration fault protection, undervoltage / sudden power outage protection, excess error protection									
Protection	Self-cooling IP00, motor IP65/IP67									
Ambient temperature	Operation: 0–55 °C (no freezing); Storage: –20–65 °C (no freezing)									
Ambient humidity	Operation, storage: 90 % RH max. (no condensation)									
Others	Elevation: 1000 m or less above sea level; Oscillation: 5.9 m/s ² (0.6 G) max.									

① Dual and triple-axis amplifiers also available

Series	Rated speed [U/min]	Rated voltage [V AC]	Rated output capacity [kW]	Type	Feature	Amplifier assignment MR-J4-□A/B												
						10	20	40	60	70	100	200	350	500	700			
HG-MR	3000	200	0.05	HG-MR053(B)	Ultra low inertia, small performance	●												
			0.10	HG-MR13(B)		●												
			0.20	HG-MR23(B)			●											
			0.40	HG-MR43(B)				●										
HG-KR	3000	200	0.05	HG-KR053(B)	Low inertia, medium performance	●												
			0.10	HG-KR13(B)		●												
			0.20	HG-KR23(B)			●											
			0.40	HG-KR43(B)				●										
HG-SR	2000	200	0.50	HG-SR52(B)	Medium inertia, medium performance				●									
			1.00	HG-SR102(B)					●									
			1.50	HG-SR152(B)								●						
			2.00	HG-SR202(B)									●					
			3.50	HG-SR352(B)											●			
			5.00	HG-SR502(B)										●				
			7.00	HG-SR702(B)												●		

EUROPEAN BRANCHES

MITSUBISHI ELECTRIC EUROPE B.V. Gothaer Straße 8 D-40880 Ratingen Phone: +49 (0)2102 / 486-0	GERMANY
MITSUBISHI ELECTRIC EUROPE B.V.-org.sl Radlická 714/113a CZ-158 00 Praha 5 Phone: +420 - 251 551 470	CZECH REP.
MITSUBISHI ELECTRIC EUROPE B.V. 25, Boulevard des Bouvets F-92741 Nanterre Cedex Phone: +33 (0)1 / 55 68 55 68	FRANCE
MITSUBISHI ELECTRIC EUROPE B.V. Viale Colleoni 7 I-20041 Agrate Brianza (MB) Phone: +39 039 / 60 53 1	ITALY
MITSUBISHI ELECTRIC EUROPE B.V. Krakowska 50 PL-32-083 Balice Phone: +48 (0)12 / 630 47 00	POLAND
MITSUBISHI ELECTRIC EUROPE B.V. 52, bld. 3 Kosmodamianskaya nab 8 floor RU-115054 Moscow Phone: +7 495 721-2070	RUSSIA
MITSUBISHI ELECTRIC EUROPE B.V. Carretera de Rubi 76-80 E-08190 Sant Cugat del Vallés (Barcelona) Phone: 902 131121 // +34 935653131	SPAIN
MITSUBISHI ELECTRIC EUROPE B.V. Travellers Lane UK-Hatfield, Herts. AL10 8XB Phone: +44 (0)1707 / 27 61 00	UK

EUROPEAN REPRESENTATIVES

GEVA Wiener Straße 89 AT-2500 Baden Phone: +43 (0)2252 / 85 55 20	AUSTRIA	Beijer Electronics A/S Lykkegårdsvej 17 DK-4000 Roskilde Phone: +45 (0)46 / 75 76 66	DENMARK	ALFATRADE Ltd. 99, Paola Hill Malta- Paola PLA 1702 Phone: +356 (0)21 / 697 816	MALTA	Sirius Trading & Services Aleea Lacul Morii Nr. 3 RO-060841 Bucuresti, Sector 6 Phone: +40 (0)21 / 430 40 06	ROMANIA	Omni Ray AG Im Schörl 5 CH-8600 Dübendorf Phone: +41 (0)44 / 802 28 80	SWITZERLAND	SHERF Motion Techn. Ltd. Rehov Hamerkava 19 IL-58851 Holon Phone: +972 (0)3 / 559 54 62	ISRAEL
TECHNIKON Oktyabrskaya 19, Off. 705 BY-220030 Minsk Phone: +375 (0)17 / 210 46 26	BELARUS	Beijer Electronics Eesti OÜ Pärnu mnt.160i EE-11317 Tallinn Phone: +372 (0)6 / 51 81 40	ESTONIA	INTEHISIS srl bld. Traian 23/1 MD-2060 Kishinev Phone: +373 (0)22 / 66 4242	MOLDOVA	INEA RBT d.o.o. Izletnicka 10 SER-113000 Smederevo Phone: +381 (0)26 / 615 401	SERBIA	GTS Bayraktar Bulvarı Nutuk Sok. No:5 TR-34775 Yukarı İSTANBUL Phone: +90 (0)216 526 39 90	TURKEY	CEG INTERNATIONAL Cebaco Center/Block A Autostrade DORA Lebanon - Beirut Phone: +961 (0)1 / 240 430	LEBANON
ESCO D & A Culliganlaan 3 BE-1831 Diegem Phone: +32 (0)2 / 717 64 30	BELGIUM	Beijer Electronics OY Peltioie 37 FIN-28400 Ulvila Phone: +358 (0)207 / 463 540	FINLAND	HIFLEX AUTOM. B.V. Wolveverstraat 22 NL-2984 CD Ridderkerk Phone: +31 (0)180 – 46 60 04	NETHERLANDS	SIMAP s.r.o. Jána Derku 1671 SK-911 01 Trenčín Phone: +421 (0)32 743 04 72	SLOVAKIA	CSC Automation Ltd. 4-B, M. Raskovoyi St. UA-02660 Kiev Phone: +380 (0)44 / 494 33 55	UKRAINE	CBI Ltd. Private Bag 2016 ZA-1600 Isando Phone: +27 (0)11 / 977 0770	SOUTH AFRICA
Koning & Hartman b.v. Woluwelaan 31 BE-1800 Vilvoorde Phone: +32 (0)2 / 257 02 40	BELGIUM	UTECO 5, Mavrogenous Str. GR-18542 Piraeus Phone: +30 211 / 1206 900	GREECE	Koning & Hartman b.v. Haarlerbergweg 21-23 NL-1101 CH Amsterdam Phone: +31 (0)20 / 587 76 00	NETHERLANDS	PROCONT, spol. s co. Prešov Küpeľná 1/A SK-080 01 Prešov Phone: +421 (0)51 7580 611	SLOVAKIA	Systemgroup 2 M. Krivonosy St. UA-03680 Kiev Phone: +380 (0)44 / 490 92 29	UKRAINE		
INEA RBT d.o.o. Aleja Lipa 56 BA-71000 Sarajevo Phone: +387 (0)33 / 921 164	BOSNIA AND HERZEG.	MELTRADE Kft. Fertő utca 14. HU-1107 Budapest Phone: +36 (0)1 / 431-9726	HUNGARY	Beijer Electronics AS Postboks 487 NO-3002 Drammen Phone: +47 (0)32 / 24 30 00	NORWAY	INEA RBT d.o.o. Stegne 11 SI-1000 Ljubljana Phone: +386 (0)1 / 513 8116	SLOVENIA	Beijer Electronics AB Box 426 SE-20124 Malmö Phone: +46 (0)40 / 35 86 00	SWEDEN		
AKHNATON 4, Andrei Ljapchev Blvd., PO Box 21 BG-1756 Sofia Phone: +359 (0)2 / 817 6000	BULGARIA	100 Kazpromavtomatika KAZAKHSTAN UL. Zhambyla 28 KAZ-100017 Karaganda Phone: +7 7212 / 50 10 00	KAZAKHSTAN	Fonseca S.A. R. João Francisco do Casal 87/89 PT - 3801-997 Aveiro, Esigueira Phone: +351 (0)234 / 303 900	PORTUGAL						
INEA RBT d.o.o. Losinjka 4 a HR-10000 Zagreb Phone: +385 (0)1/36940-01/-02/-03	CROATIA	Beijer Electronics SIA Ritausmas iela 23 LV-1058 Riga Phone: +371 (0)784 / 2280	LATVIA								
AutoCont S.s.r.o. Technologická 374/6 CZ-708 00 Ostrava-Pustkovec Phone: +420 595 691 150	CZECH REPUBLIC	Beijer Electronics UAB Savanoriu Pr. 187 LT-02300 Vilnius Phone: +370 (0)5 / 232 3101	LITHUANIA								



Version check



Mitsubishi Electric Europe B.V. // FA - European Business Group // Gothaer Straße 8 // D-40880 Ratingen // Germany
Tel.: +49(0)2102-4860 // Fax: +49(0)2102-4861120 // info@mitsubishi-automation.com // www.mitsubishi-automation.com

Specifications subject to change // Art. no. 251478-A // 04.2012

All trademarks and copyrights acknowledged.